



EARLY WARNINGS

Save lives and livelihoods.



GFDRR
Global Facility for Disaster Reduction and Recovery



Administered by
THE WORLD BANK
IBRD • IDA | WORLD BANK GROUP



UNDRR
UN Office for Disaster Risk Reduction

HOW CREWS CONTRIBUTES

Everyone on Earth is protected from hazardous weather, water, or climate events through life-saving early warning systems by the end of 2027 (Early Warning for All Executive Plan, 2022)

Substantially reduce global disaster mortality, economic loss, and the number of affected people globally by 2030 (SDG Goal #1 No poverty and Sendai Framework Targets A&B)

Substantially increase the availability of and access to multi-hazard early warning systems and disaster risk information and assessments to people by 2030 (Sendai Framework Target G)

Enhance action on early warning systems as an area of cooperation for averting, minimizing and addressing loss and damage associated with the adverse effects of climate change (Paris Agreement, 2015)

CREWS Initiative

- ✓ **Bridges the early warning capacity gap** in Least Developed Countries (LDCs) and Small Island Developing States (SIDS) - CREWS provides technical assistance and capacity building to increase access to early warnings.
- ✓ **Works with the most vulnerable communities**, fragile and conflict affected countries while empowering the leadership of women.
- ✓ **Respond to the needs expressed by countries** for every element of the early warning value-chain, including early and anticipatory action and community preparedness.

Systematic Observations Financing Facility (SOFF)

- ✓ Provides grant financing and technical assistance for the **sustained collection and international exchange of surface-based weather and climate observations** according to the Global Basic Observing Network regulations.
- ✓ **Leverages partners' resources** for complimentary and coordinated support.
- ✓ **Works in countries with the most severe shortfalls in observations**, prioritizing LDCs and SIDS.

SOFF and **CREWS** support the roll-out of the Country Hydromet Diagnostic tool of the Alliance for Hydromet Development. Every country benefiting can apply for support in the roll out of the Diagnostic tool



My aspirations as Chair of the CREWS Steering Committee is to ensure that CREWS is an effective financial mechanism covering the most vulnerable countries and enabling the most vulnerable people in them to thrive.

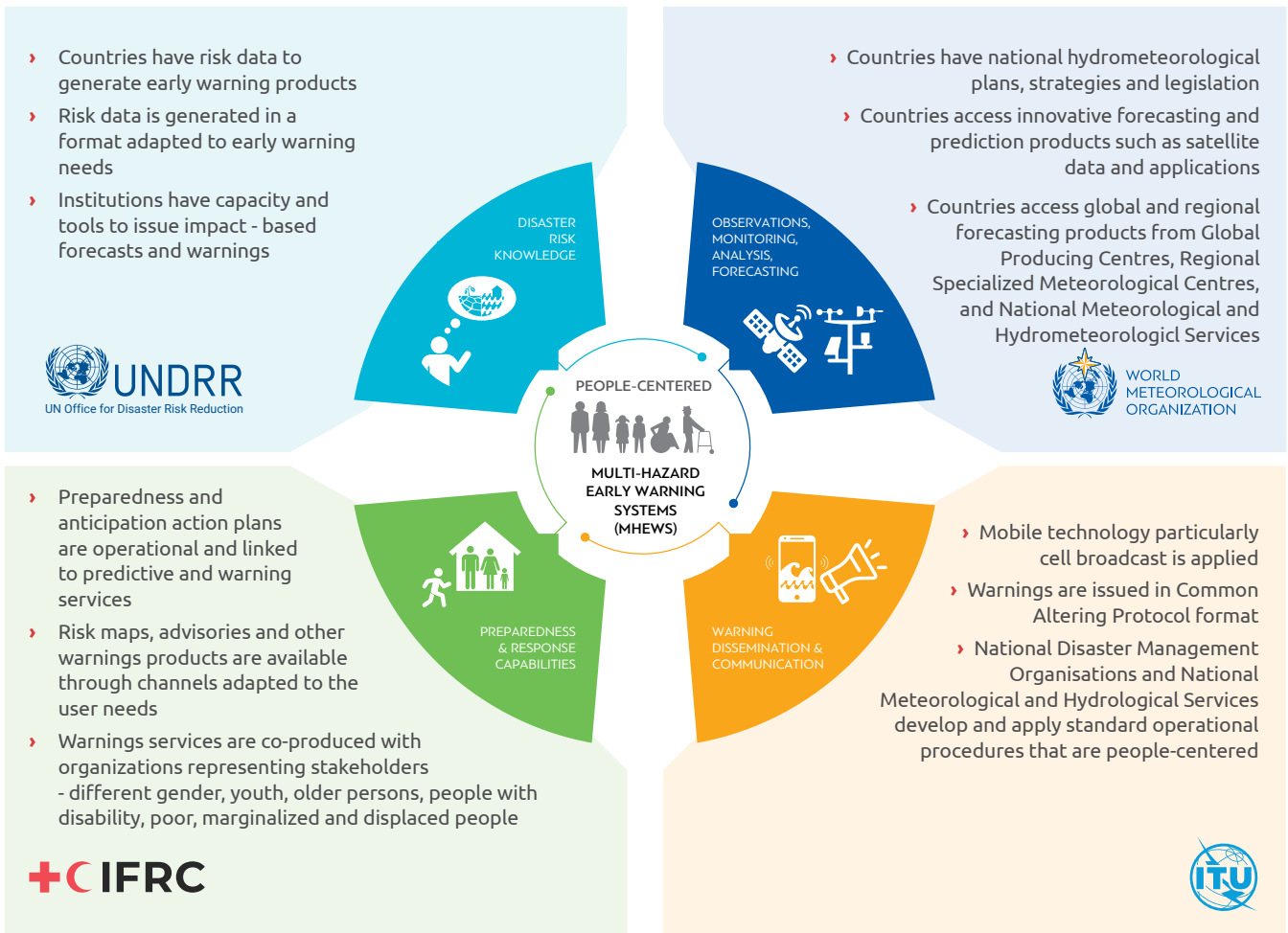
GERARD HOWE
Head, Adaptation, Nature & Resilience Department, Energy, Climate and Environment Directorate FCDO, UK and the CREWS Chair



The world is in a race against time to protect those on the frontlines of the climate crisis. Early warning systems are an easily available, effective and proven lifesaving tool to protect the lives. All stakeholders must be mobilized to support the achievement of the Secretary-General's goal of ensuring universal access to early warning systems by 2027. We need all hands on deck to make this happen. One life lost from a lack of access to an effective early warning system is one life too many.

SELWIN HART
Special Adviser to the United Nations Secretary-General on Climate Action and Just Transition

Our results



Our value proposition



UNIQUE

A financing mechanism that builds sustained institutional capacity driven by countries and supported by the expertise and specialist networks of its partners.



MULTIPLIER

Country portfolios promote a favorable environment for, and leveraging of, effective additional financing.



PEOPLE-CENTERED

Local organizations are listened to and engaged so that investments are driven by the needs of end-users.



GENDER-SENSITIVE

CREWS recognizes women's empowerment as fundamental for building resilience, and that gender influences the way people access, process, and respond to information and warnings.



SOLUTION-ORIENTED

Good and innovative practices are applied and shared continuously across national and regional projects.



PROMOTE COHERENCE

Programming considers existing projects and other international partner initiatives to ensure value-added to the national context and needs.

CREWS IN ACTION

104 USD million

CONTRIBUTED FOR 11 COUNTRIES PROJECTS AND 8 REGIONAL PROJECTS

802 USD million

ADDITIONAL FUNDS ARE BEING LEVERAGED



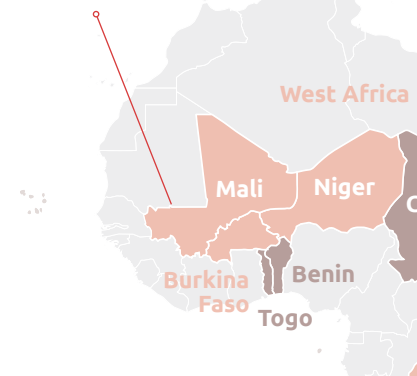
BURKINA FASO

- National Met Service, ANAM, has improved weekly and monthly weather forecasts. 92% satisfaction rate amongst hydromet trained staff regarding ability to translate acquired knowledge into better forecasting services.
- A flash flood early warning system established with flood risk maps, water level monitoring, predictions and warnings for flood response.
- 1,100 farmers - 34% women - in three pilot sites use weather and climate forecasts for farming decisions provided through community radio, resulting in less loss, lower costs, greater yields and a 267% average income increase over 2 years.



HAITI

- Fundamental operations and communication channels for the Hydrometeorological Unit of Haiti restored following the 2021 earthquake.
- A national Strategic Hydrometeorological Plan for Haiti was endorsed, defining mandates for improved early warning services.



CREWS Haiti has given us immense hope. We have great expectations it will improve our services. It will certainly strengthen the Haiti Hydrometeorological Unit institutionally and technically. Sectors, including agriculture and civil protection, will benefit from the weather forecasts and early warnings we will be able to provide.

MARCELIN ESTERLIN
Director, Hydrometeorological Unit of Haiti



DEMOCRATIC REPUBLIC OF THE CONGO

- Forecasting quality and accuracy improved with open-source database.
- Staff at the national Hydro-met agency, Mettelsat trained in latest forecasting and warning skills.
- 1.5 million people in the N'Djili and Kalamu provinces protected through access to flood early warnings.

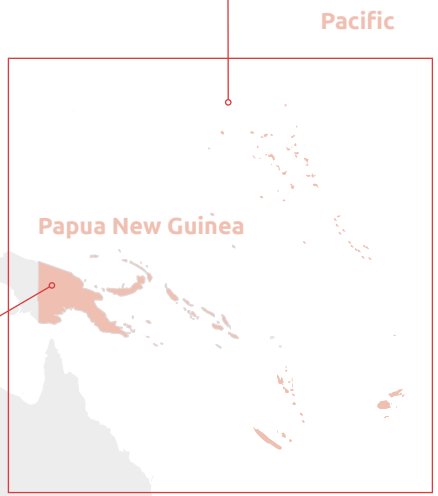
CREWS has contributed to reducing flood disaster risks in two pilot watersheds – N'Djili and Kalamu – by establishing the flood Early Warning System. The funding has also strengthened our internal capacity in forecasting and monitoring in line with our institutional mandate.

JOSEPH ITELA
General Director, a.i, Mettelsat, and DR Congo
Permanent Representative to WMO



PACIFIC

- Coastal inundation forecasting systems in place for Kiribati and Tuvalu to improve safety for coastal communities.
- Tonga and Samoa successfully transitioned to impacted-based forecasting systems with impact tables and advice, action statements and tools to communicate to the public.
- 1.13 million people in Fiji, Kiribati, Tonga and Tuvalu with access to early warning services Kiribati passed its first-ever Meteorological Act. The third Pacific SIDS after Tonga and Tuvalu with robust governance, oversight, and modalities for early warning services.



PAPUA NEW GUINEA

- A drought monitoring system is in place using satellite observations
- Regular drought advisories circulated with risk maps for 22 provinces.
- Three users' groups - Energy, water and agricultural sectors - use impact-based drought warnings service with demonstrated socioeconomic benefit

● CREWS project countries
 ● CREWS pipelined countries



HOW TO ACCESS FUNDING

Accelerated Support Window

Short term expert assistance and advisory services

Budget

USD 50,000 to 150,000 and up to USD 250,000

Simplified approval process: 4-6 weeks.

Implementation period: max 12 months

Eligibility

All ODA-eligible LDCs and SIDS. Submission: (i) directly by countries, (ii) by the CREWS Implementing Partners with requires country endorsement letter



Climate adaptation is a MUST. For many, this is a matter of life and death. Hydrometeorological services are engaged in improving their early warning systems, which are the linchpin of adaptation and disaster risk reduction. As of today, many countries are notable to provide these early warnings to protect their people. As part of the global community, we embarked on the 'Early Warnings for All' initiative, because every person on Earth needs to have access to timely, authoritative, and life-saving weather and climate risk information by the end of 2027. CREWS is an essential vehicle to achieve this goal.

PROF CELESTE SAULO
WMO Secretary-General



The World Bank is dedicated to supporting countries' efforts to build resilience to climate shocks. The technical assistance we deliver with funding from CREWS is critical to the identification, preparation, and implementation of government led investments in and operation of early warning systems.

BERNICE VAN BRONKHORST
Global Director for Urban, Resilience and Land,
World Bank

Country driven regional and national multi-year projects

Budget

Country projects: USD 3-5 million

Regional projects: USD 5-7 million

Eligibility

All ODA-eligible LDCs and SIDS. Financing of national and regional projects is based on:

- › Adherence to the CREWS Value Proposition (i.e. country ownership, people-centered, gender-responsive, leveraging, coherence and coordination)
- › Initial State of Play - project rationale - state of the country/region against the 4 pillars of an early warning system and mapping of capacities of key actors

GCF/SAP CREWS Scaling Up Framework for Early Warning

Provides fast-track access to for countries to the Green Climate Fund finance through its Simplified Approval Process (SAP)

Budget

Up to USD 25 million per project

Eligibility

Countries with successful ongoing or recent completed CREWS projects



CREWS's focus on partnerships, ownership and leadership by regional, national and local institutions ensure sustainability of inclusive and multi-hazard early warning systems, which is critical to the success of the EW4All Initiative.

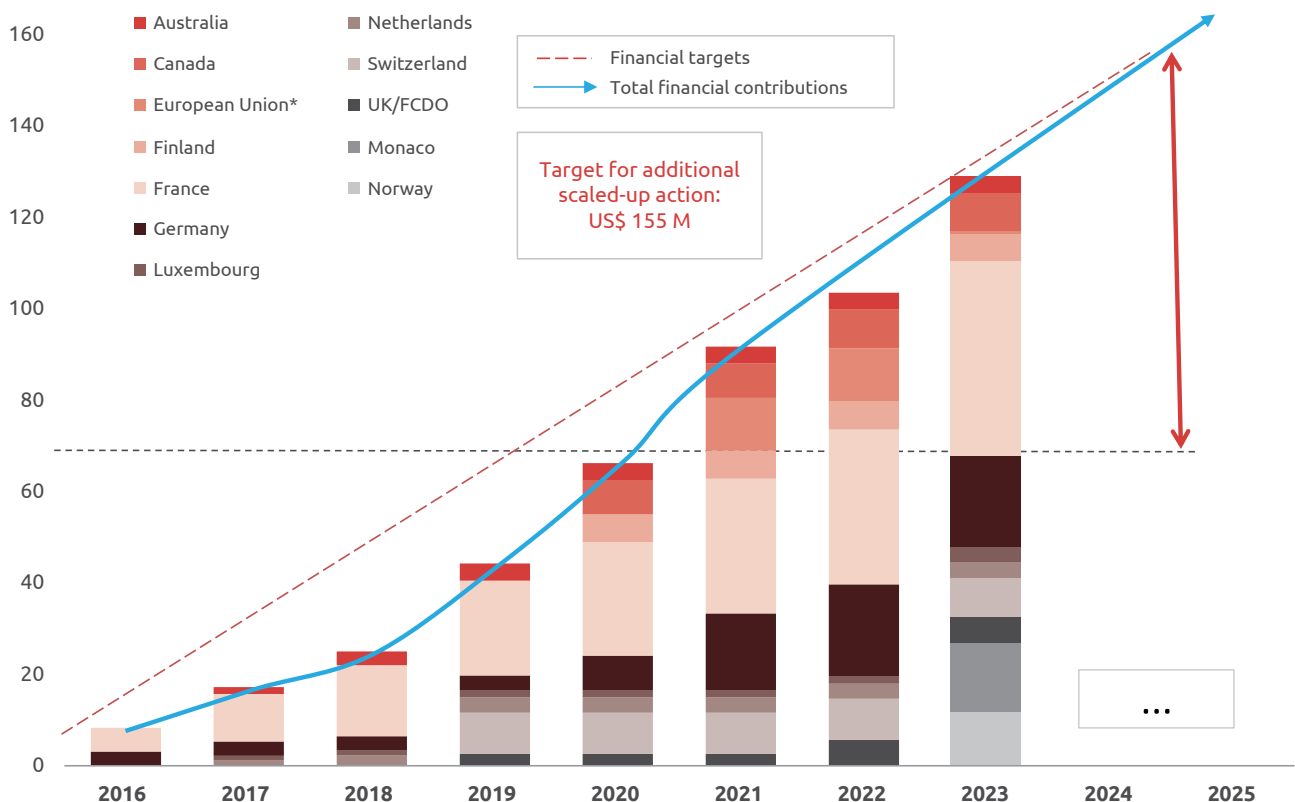
PAOLA ALBRITO
Director for UNDRR

FINANCIAL TARGETS

To achieve its objectives, CREWS has the following funding targets

- › USD 77 million immediate funding requirements - based on the list of pipeline countries with needs, demand and leveraging potential and readiness to implement projects
- › USD 155 million additional funding needs to the CREWS Financial Intermediary Fund (FIF) over the next 5 years – in addition to the USD 104 million already committed
- › USD 700 million to be leveraged over the next 5 years through development partners such as the World Bank, and financing mechanisms, such as the GCF including at least 7 CREWS projects scaled-up through GCF/SAP-up to USD 25 million per project
- › 25 LDC and SIDS, that have requested support we provided with just in time technical assistance and expert advisory services through the CREWS Accelerated Support Window – USD 50'000 to 150'000 (maximum USD 250'000)

Estimated Resources required by 2025 (Million USD)



*: The European Commission is contributing €10 million to the CREWS initiative through.

The CREWS Initiative gratefully acknowledges the support of:

CREWS Members



Australia



Austria



Canada



Finland



France



Germany



Luxembourg



Monaco



Netherlands



Norway



Switzerland



United Kingdom
(Chair)

CREWS Observers



European Commission



Japan



Mexico



New Zealand



Spain



USAID

CREWS Implementing Partners



WORLD METEOROLOGICAL ORGANIZATION



GFDRR
Global Facility for Disaster Reduction and Recovery

Administered by
THE WORLD BANK
IBRD - IDA | WORLD BANK GROUP



UNDRR
UN Office for Disaster Risk Reduction

CREWS Operational Partners



Visit www.crews-initiative.org

Contact us: crewsinfo@wmo.int

Engage with us: @CREWSinitiative

